



Filtration Unit OF7

Description

The filtration unit OF7 is designed as a portable service unit for filling hydraulic systems, flushing small hydraulic systems and for offline filtration.

As an option, the OF7 can be ordered with the ContaminationSensor CS 1000. This makes it possible to simultaneously monitor the particle contamination in the oil. The cleanliness class is given according to ISO, SAE and NAS classifications.

Applications

- Filtered or unfiltered filling of hydraulic systems
- Temporary offline filtration for hydraulic systems
- Filtered or unfiltered transfer of fluids

Advantages

- Improvement in service life for both components and system filters
- Extension of oil lifetime
- Greater machine availability
- Simple operation
- Compact design
- Option: continuous monitoring of oil cleanliness during the cleaning process through the use of CS 1000 (OF7CM)
- Option: built-in protection against dry running and control cable for remote maintenance (OF7K)
- Option: version for viscosities up to 1000 mm²/s and 180 filter cartridge (OF7S90Px)

Technical specifications

| | | |
|--|---|--|
| Max. flow rate | OF7S OF7K/OF7CM | 15 l/min 10 l/min |
| Pump type | Vane pump | |
| Operating pressure | 3.5 bar max | |
| Permitted suction pressure at suction port | -0.4 bar to +0.6 bar | |
| Viscosity range | OF7S10/OF7K10: | 5 ... 350 mm ² /s |
| | OF7CM: | 5 ... 200 mm ² /s |
| | OF7S90Px: | 15 ... 1000 mm ² /s |
| Permitted operating fluid | Mineral oil (DIN 51424) | |
| Fluid temperature | 0 ... 80 °C | |
| Ambient temperature | -20 ... 40 °C | |
| Seals, gaskets | NBR | |
| Protection class | IP 54 | |
| Power cable, length | 2.8 m | |
| Length of hoses | 2.5 m | |
| Hoses | Suction hose NW 20 with lance Pressure hose NW 16 with lance | |
| Weight | OF7S10/OF7K10 OF7S90Px/OF7CM | ≈ 12.5 kg (empty) ≈ 18.0 kg (empty) |

Recommended standard models

| Filtration unit | Part No |
|-----------------|---------|
| OF7S10P1M1B03E | 92 164 |
| OF7S10P1M1B05E | 92 161 |
| OF7S10P1M1B10E | 92 162 |
| OF7S10P1M1P10E | 92 165 |
| OF7S10P1M1B20E | 92 163 |

Model code

OF7 S 10 P 1 M 1 B 10 E /-C1

Basic type

OF7

Model

S = standard

K = special model

CM = Fluid Condition Monitoring

Type code

10 = standard

90⁽¹⁾ = special model

Seals, gaskets

P = NBR (Perbunan)

Pump type

Code

Nominal flow rate

Max.

viscosity

1⁽¹⁾

15 l/min

350 mm²/s

2

10 l/min

200 mm²/s

X⁽¹⁾ other nominal flow rates on request

Motor

D⁽¹⁾ = pneumatic motor

K = 1x 120 V 50 Hz, 0,18 kW

M = 1x 230 V 50 Hz, 0,18 kW

N*⁽¹⁾ = 3x 380-420 V 50 Hz, 3x 440-480 V (60 Hz)

T = 12 V DC, 0,2 kW

U = 24 V DC, 0,2 kW

X⁽¹⁾ = other voltage on request

* without on/off switch, cable or connector

Filter size

1 = element 160 (spin-on cartridge)

2⁽¹⁾ = element 180 (spin-on cartridge)

Filter material

B = Betamicon® (BN)

L = empty filter cartridge

P = paper (P)

Filtration rating

03 = 3 µm BN

05 = 5 µm BN

10 = 10 µm BN, P

20 = 20 µm BN

Clogging indicator

E = pressure gauge

Supplementary details for model OF7CM

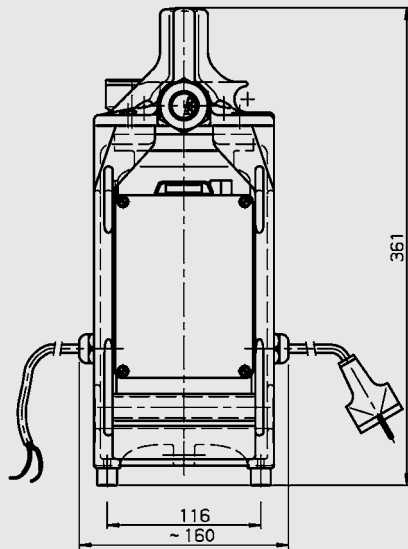
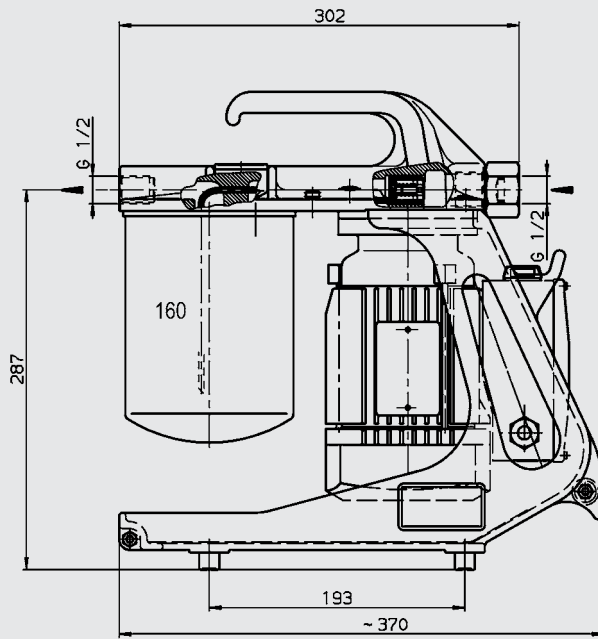
C1 = ContaminationSensor CS1320

Z = without ContaminationSensor

⁽¹⁾ Not possible for OF7CM version

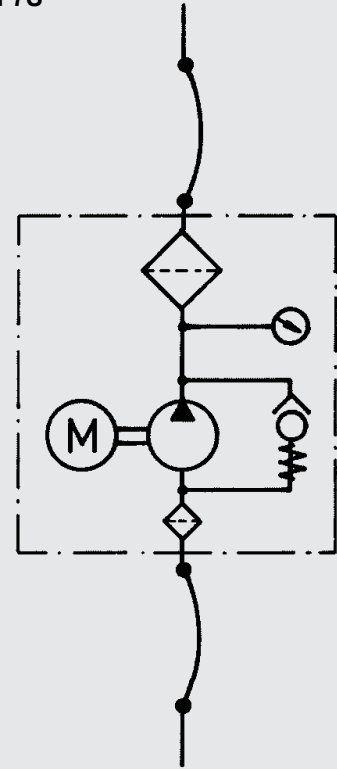
Dimensions

OF7S10 / OF7K10

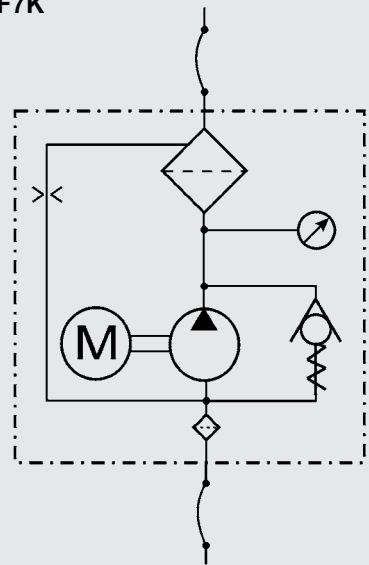


Hydraulic circuit diagram

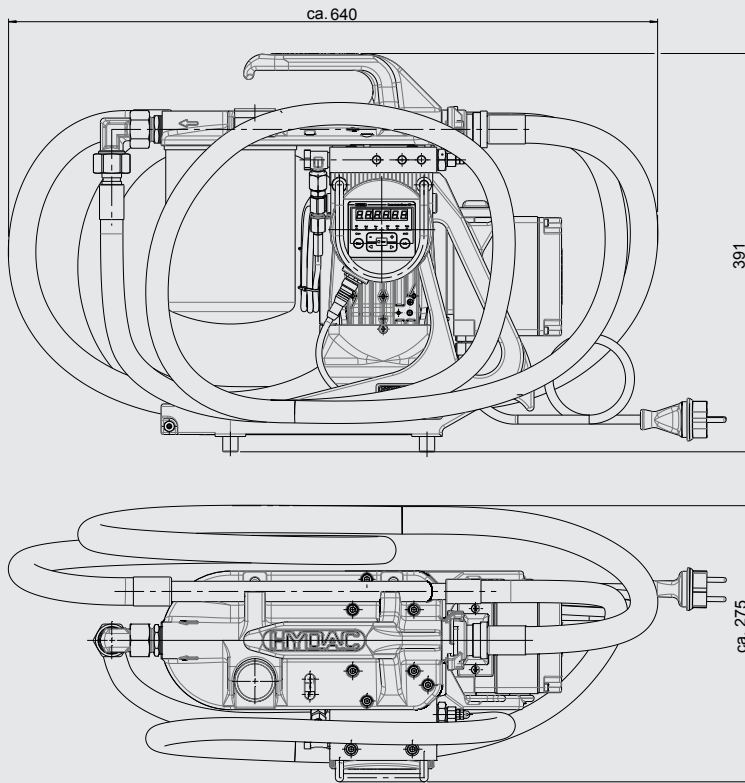
OF7S



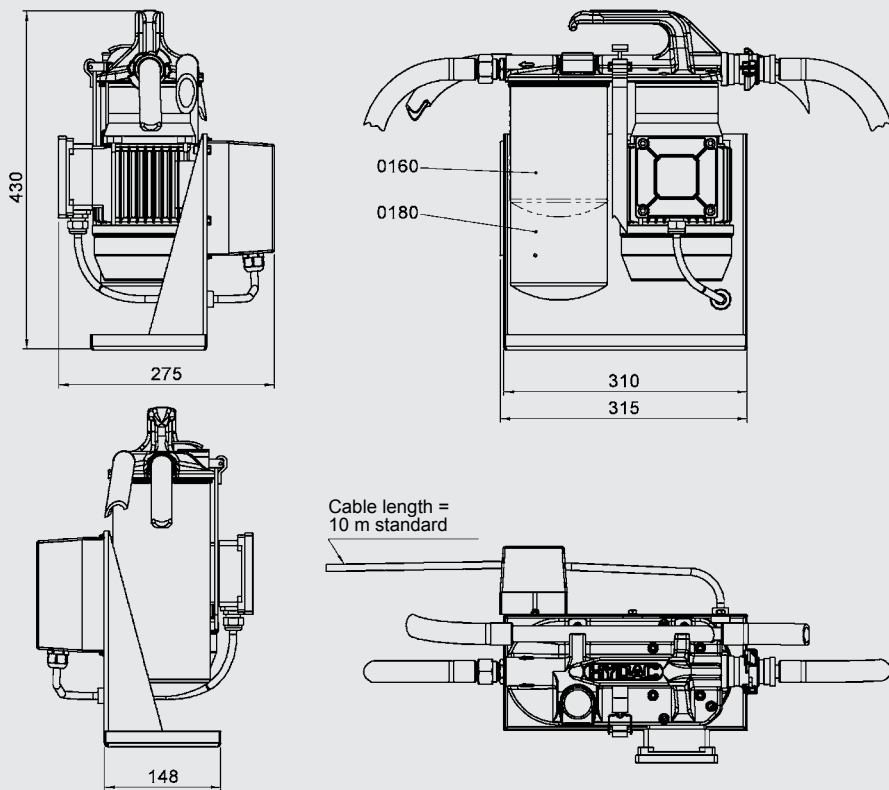
OF7K



Dimensions OF7CM10



Dimensions OF7S90



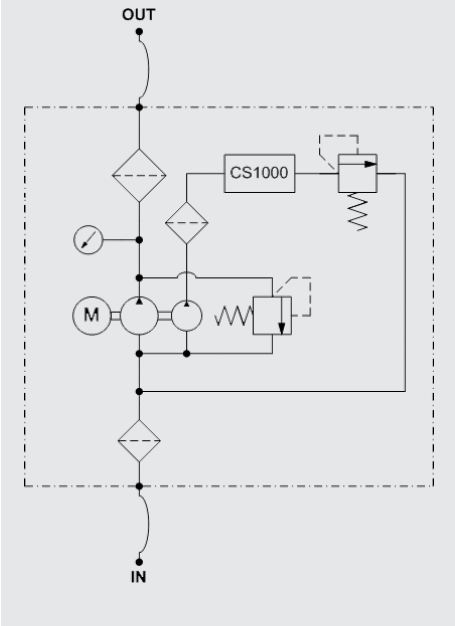
Note

The information in this brochure relates to the operating conditions and applications described.

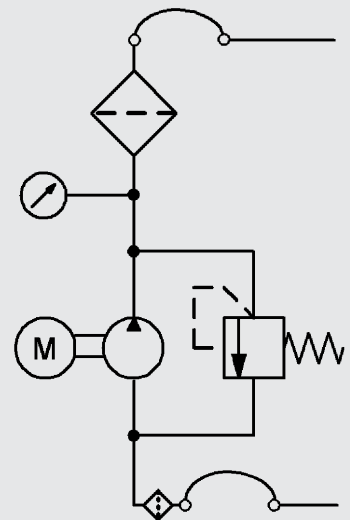
For applications and operating conditions not described, please contact the relevant technical department.

Subject to technical modifications.

Hydraulic circuit diagram OF7CM



Hydraulic circuit diagram OF7S90



HYDAC FILTER SYSTEMS GMBH

Industriegebiet
D-66280 Sulzbach / Saar
 Tel.: +49 (0) 6897/509-01
 Fax: +49 (0) 6897/509-846
 Internet: www.hydac.com
 E-Mail: filtersystems@hydac.com